

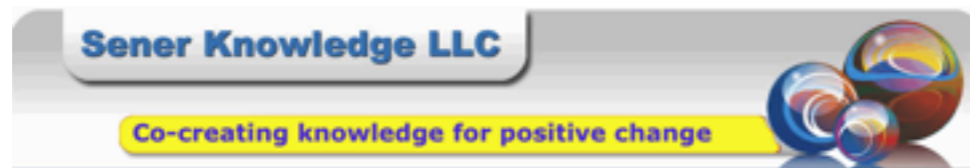
# Evaluation of ATE Centers and Projects: Lessons Learned

**3CS Conference**

**Moraine Valley CC, Palos Hills, IL, July 21, 2014**

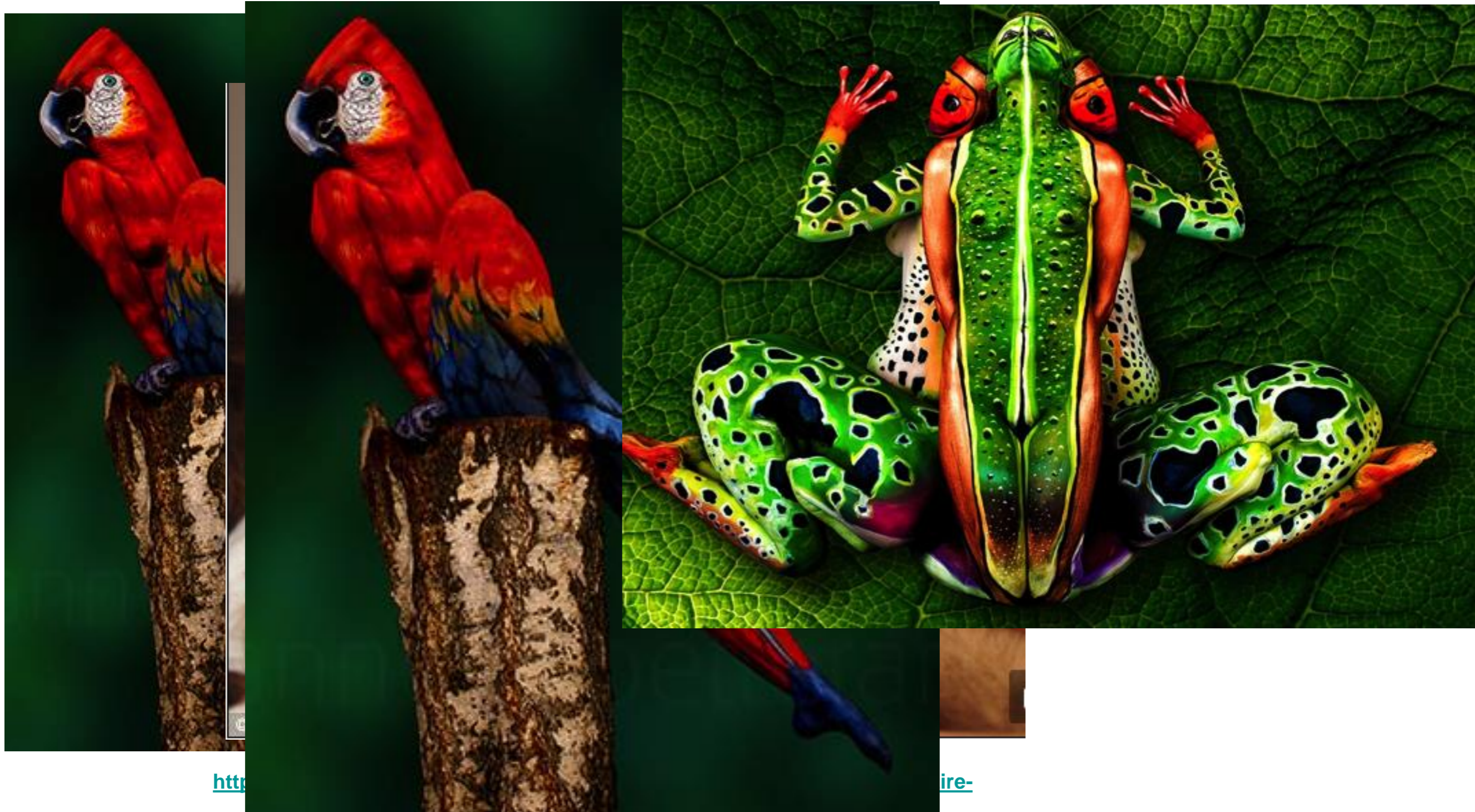


John Sener  
Founder/CKO,  
Sener Knowledge LLC



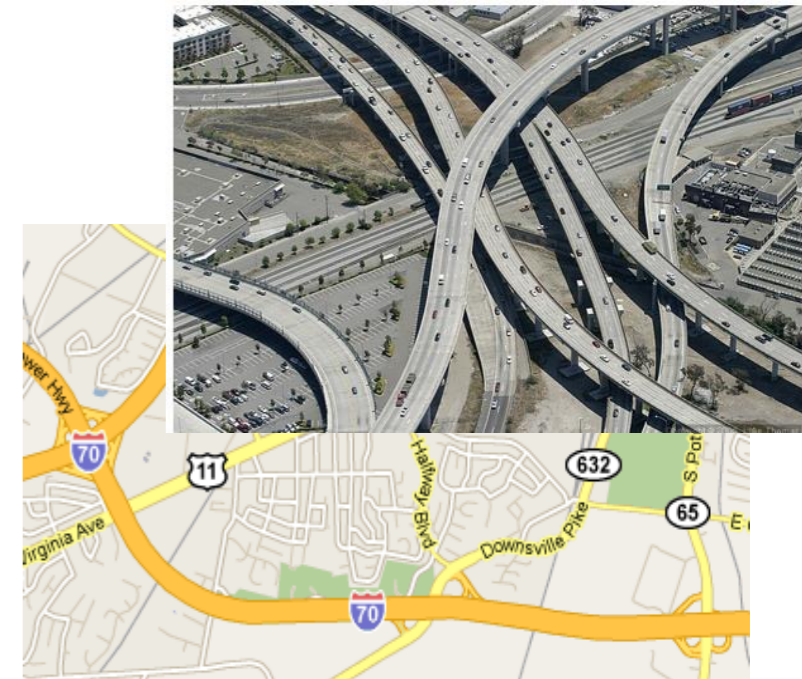
# Two Minutes of Inspiration: Wildlife Art as ATE Adventure...

<http://www.johannesstoetterart.com/>

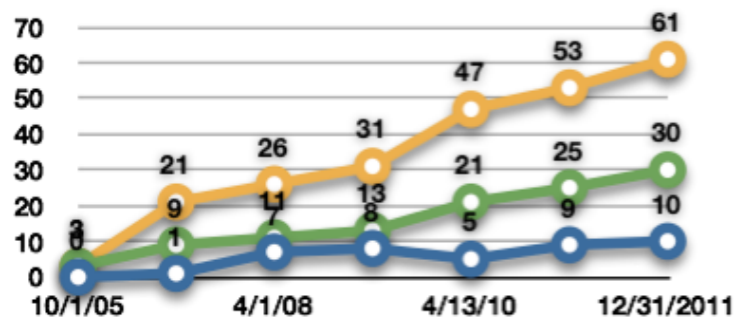
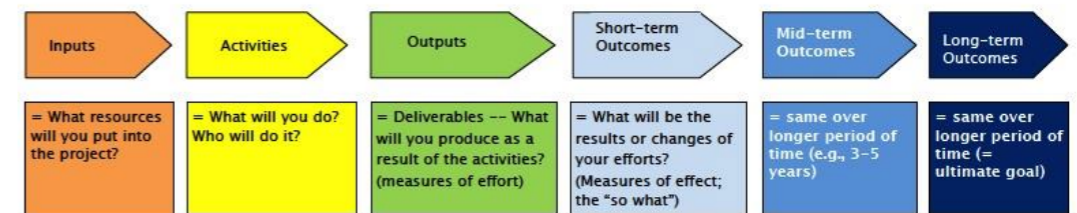


# Evaluating ATE Centers & Projects: Lessons Learned

- Connect map with territory
- Move from pipeline to interstate
- Evaluation is not “external”
- Build a productive PI-evaluator relationship
- Determining impact, effectiveness is key



Logic Model: Template



- # of institutions w/mappings in progress
- # of institutions w/mappings completed
- # of mappings completed



APRIL 2014

[cyberwatchcenter.org](http://cyberwatchcenter.org)  
(301) 322-0452

## NCC Research Team - Conducting Research on Competency Driven Simulation Design

The National CyberWatch Center Research team, in collaboration with the National Cyber League (NCL) Education Committee and the Cybersecurity Competition Federation, is mapping the NCL competition structure (competition events, ISIGHT Partners' Puzzle



CyberWatch researchers, Dr. David Tobey, Dr. Portia Pusey, and Dr. Diana Burley, will highlight the process and outcomes of the job performance mapping for designing, scoring, comparing, and evaluating cybersecurity competitions; present lessons learned and discuss how to apply the mapping process to other competitions at the 2014 Community College Cyber Summit (3CS), July 21-22 in Chicago.



### OUR mission

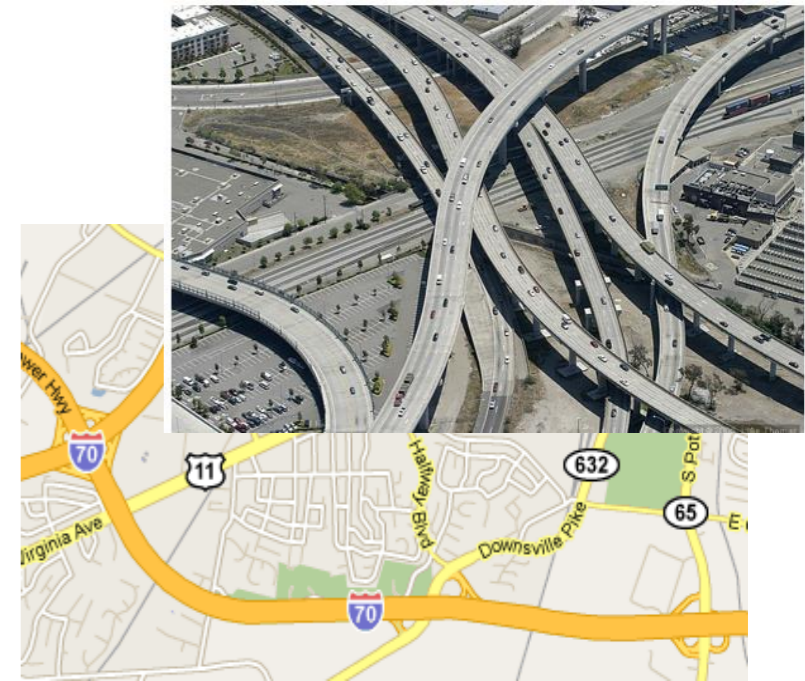
Evaluate is the evaluation resource

### The PI-Evaluator Relationship

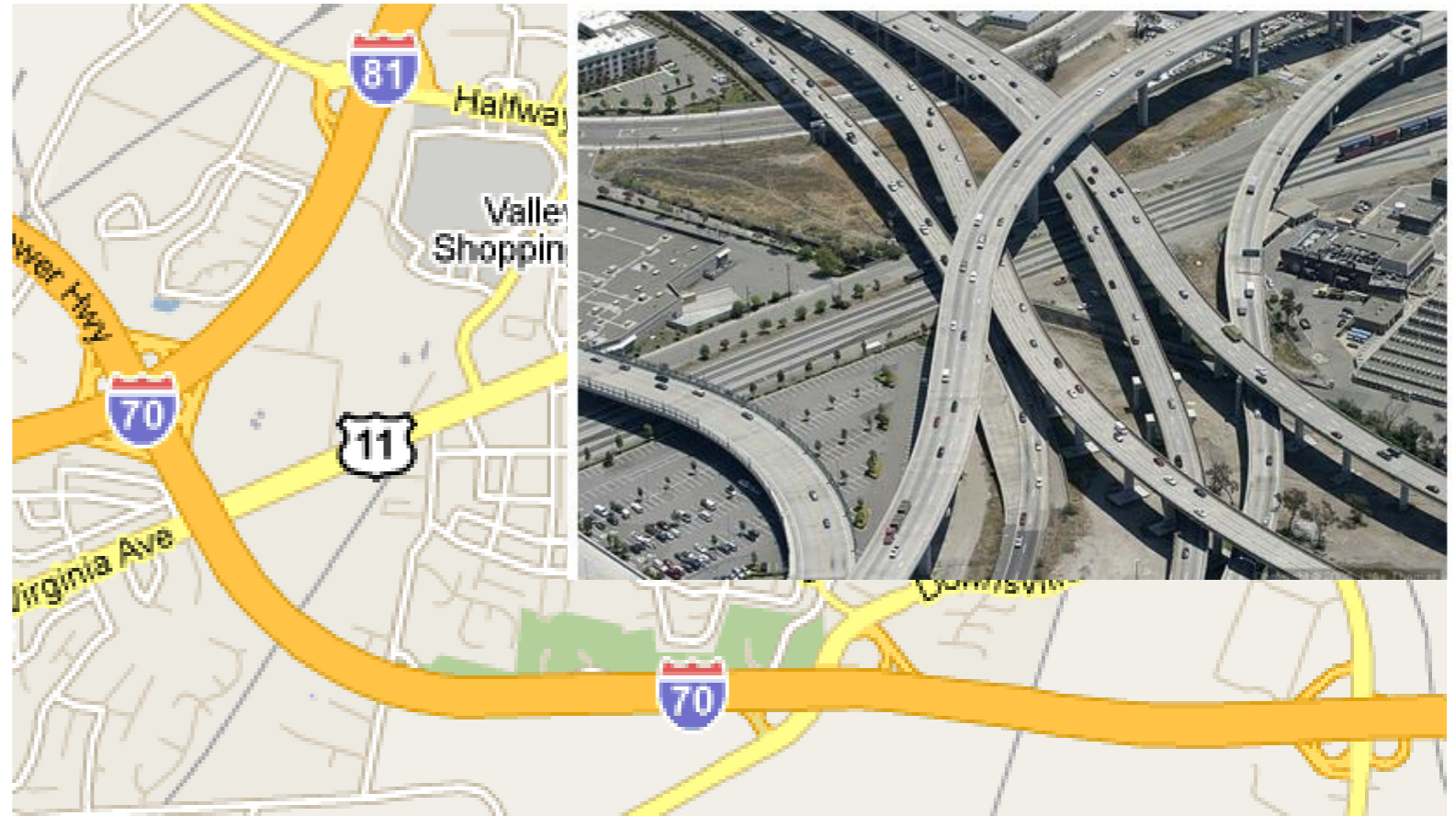
What is the key to a productive PI-evaluator relationship? Vera Zdravkovich and John Sener share their perspectives.

# Connecting the map with the territory

- Evaluator's role: help you relate proposal plans to real-life execution



# Pipeline vs. Interstate



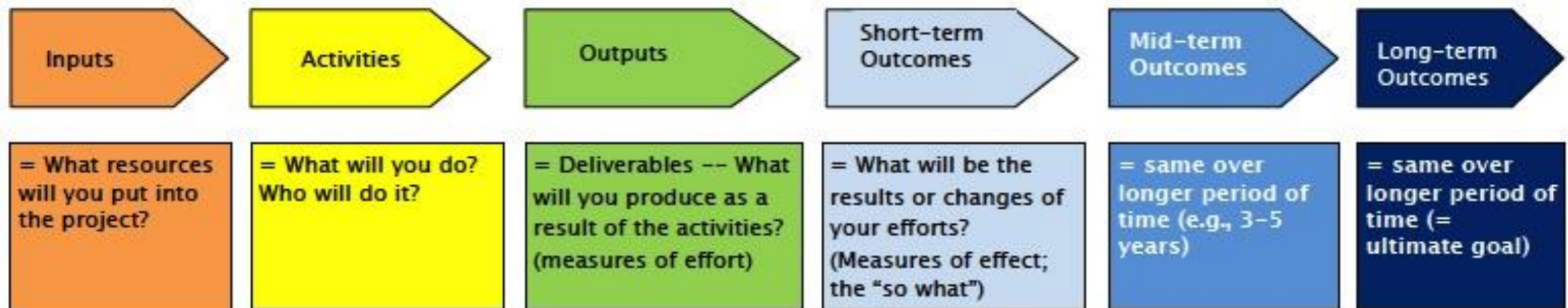
- Point A --> Point B
- Moving a commodity
- Relatively direct, uniform flow, schedule

- Multiple entry/exit points
- Users have, make choices
  - Variable flow, schedule
- Alternate routes; a roadmap helps
  - Frequent on/offers ("stopouts")
- Two-way traffic (e.g., "return" to comm. coll.)

# Evaluation is not “external”

- External evaluator does not mean evaluation is (just) external

## Logic Model: Template



# Building a Productive PI-Evaluator Relationship

- Evaluator as active team member, resource vs. silent observer
- Develop a collegial, synergistic relationship
- Treat evaluation as an opportunity for value, meaning
- Get evaluation/evaluator involved early in process
- Long-term: evaluation team member becomes institutional memory source



Evaluate is the evaluation resource

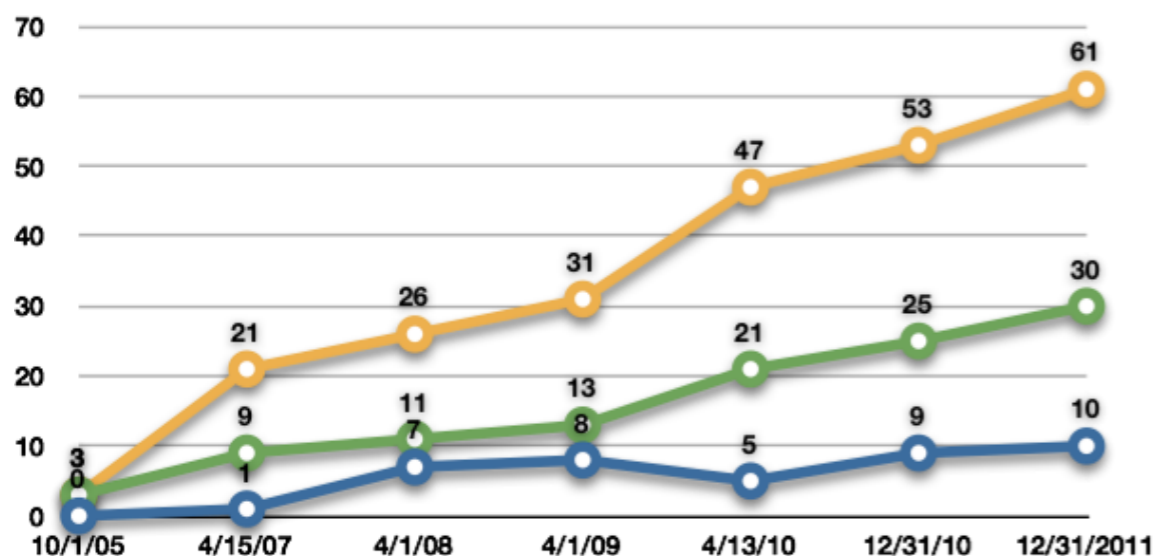


What is the key to a productive PI-evaluator relationship? Vera Zdravkovich and John Sener share their perspectives.

<http://evalu-ate.org/downloads/resources/conduit-fall10.pdf>

# Defining Measures of Impact and Effectiveness: Some Tips

- Stats and stories
- Establish common agreement on terms and language



- # of institutions w/mappings in progress
- # of institutions w/mappings completed
- # of mappings completed



**APRIL 2014**

[cyberwatchcenter.org](http://cyberwatchcenter.org)  
(301) 322-0452

## NCC Research Team - Conducting Research on Competency Driven Simulation Design

The National CyberWatch Center Research team, in collaboration with the National Cyber League (NCL) Education Committee and the Cybersecurity Competition Federation, is mapping the NCL competition structure (competition events, iSIGHT Partners' Puzzle



CyberWatch researchers, Dr. David Tobey, Dr. Portia Pusey, and Dr. Diana Burley, will highlight the process and outcomes of the job performance mapping for designing, scoring, comparing, and evaluating cybersecurity competitions; present lessons learned and discuss how to apply the mapping process to other competitions at the 2014 Community College Cyber Summit (3CS), July 21-22 in Chicago.

[http://evalu-ate.org/downloads/resources/SENER\\_challenge\\_handout.pdf](http://evalu-ate.org/downloads/resources/SENER_challenge_handout.pdf)



# Defining Measures of Impact and Effectiveness: Some Tips

- Big picture and shining example (nuggets)
- ROE > ROI (ROE = Return on Expectations)



[http://www.sciencebuzz.org  
/image/earth-our-place-  
space](http://www.sciencebuzz.org/image/earth-our-place-space)



[http://www.wpclipart.com/rocks\\_minerals/G/gold/Gold\\_156\\_ounce\\_nugget  
\\_found\\_with\\_metal\\_detector.png.html](http://www.wpclipart.com/rocks_minerals/G/gold/Gold_156_ounce_nugget_found_with_metal_detector.png.html)

[http://evalu-ate.org/downloads/resources/SENER\\_challenge\\_handout.pdf](http://evalu-ate.org/downloads/resources/SENER_challenge_handout.pdf)

# Defining Measures of Impact and Effectiveness: Some Tips

- Seek alignment
- Pay attention to the unanticipated
- Keep timeframe in mind



[http://evalu-ate.org/downloads/resources/SENER\\_challenge\\_handout.pdf](http://evalu-ate.org/downloads/resources/SENER_challenge_handout.pdf)

# Contact Info; Q&A/Discussion

---

- John Sener, Sener Knowledge - [jsener@senerknowledge.com](mailto:jsener@senerknowledge.com)
- More on *Seven Futures*: [www.thesevenfutures.com](http://www.thesevenfutures.com)
- Follow me on Twitter! @jsener

